

Is It The *Endeavour* Bark?



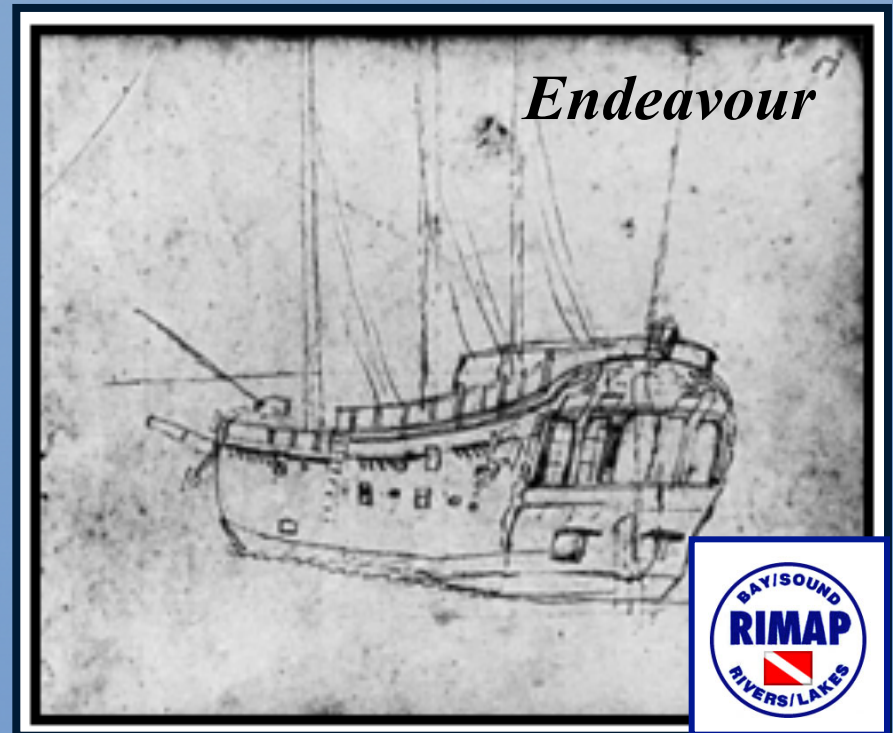
“How we got here”

D. K. (Kathy) Abbass, Ph.D.

RIMAP – Principal Investigator

Construction details:

- Where and when built
- Construction technology
- Size and form of ship
- Wood and other materials
- Changes from repairs around the world





James Cook

Endeavour sailed:

- **As a North Sea collier**
- **Cook circumnavigation**
- **To the Falklands**
- **Merchant to Archangel**
- **Chartered transport as *Lord Sandwich***



The Revolution in In Rhode Island:

British transports to occupy Newport in 1776

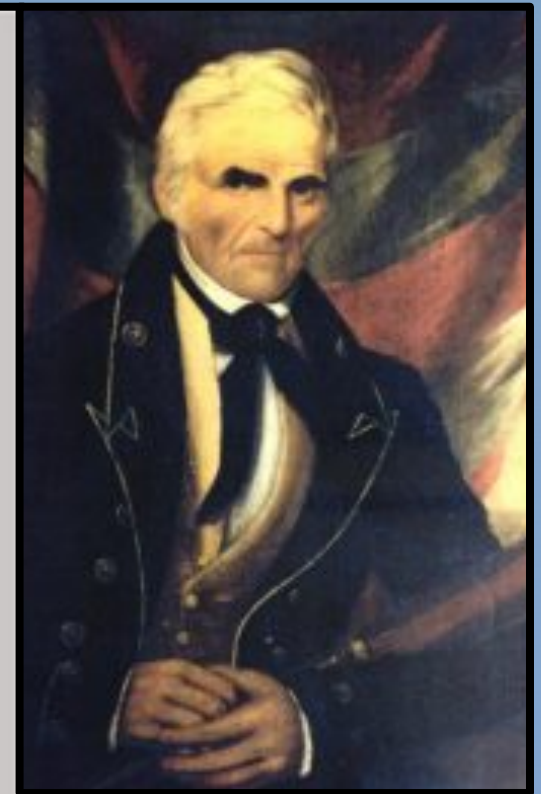
| Transports | Tons | Troops Carried | Transports | Tons | Troops Carried |
|--------------------------|------|-------------------------------|------------------------|------|--------------------------------|
| Amity's Admonition | 410 | 5th Brig Regt 63d | John | 229 | 5th Brig Regt 54 th |
| Amity's Production | 250 | Cavalry Ship | John | 302 | Cavalry Ship |
| Amity's Providence | 327 | Artillery Horse Ship | John & Bella | 194 | Wuttginau |
| Antelope | 207 | 3d Brig Regt 52d | Judith | 377 | Ditfourth |
| Argo | 289 | Light Infantry | Lord Sandwich * | 368 | Hessian Brigs |
| Assistance | 256 | Cavalry Ship | Mercury | 295 | Light Infantry |
| Chambre | 360 | 5th Brig Regt 43d | Minerva | 218 | Huyn |
| Charming Sally | 267 | Hessian Brigs | Minerva | 258 | Cavalry |
| Dutton | 676 | Hospital Ship | Nancy | 245 | Ordnance |
| Eagle | 324 | Schmidt Bunau | New Blessing | 256 | Hessian Brigs |
| Eagle | 344 | 3d Brig Regt 37th | Noble Bounty | 273 | Ordnance |
| Earl of Derby | 370 | Ordnance | Rachel & Mary * | 320 | Grenadiers |
| Earl of Effingham | 263 | Genls Jones & Smith | Roman Emperor | 182 | Schmidt Bunau |
| Earl of Orford * | 231 | 5th Brig Regt 43d | Savile | 355 | 3d Brig Regt 52d |
| Eleonora | 286 | Ditfourth | Sea Venture | 299 | 3d Brig Regt 38th |
| Empress | 251 | 3d Brig Regt 10th | Sisters | 254 | Huyn |
| Esk | 304 | Lasberg P. Charles | Sovereign | n.a. | Vict/Clinton Bag. |
| Fanny | 246 | Cavalry | Spring | 378 | Lasberg P. Charles |
| Father's Goodwill | 333 | Wuttginau | Susannah * | 240 | 3d Brig Regt 37th |
| Felicity | 264 | Engineers Stores | Three Sisters | 382 | 5th Brig Regt 63d |
| Glencairn | 193 | Huyn | Tryal | 230 | Ditfourth |
| Grand Duke of Russia * | 672 | 5th Brig Regt 54th | Tweed | 162 | Lasberg P. Charles |
| Grand Dutchess of Russia | 308 | 3d Brig Regt 38th | Young Tom | 173 | Wuttginau |
| Grosvenor | 714 | Hospital Ship | Union * | 302 | Schmidt Bur |
| Hunter | 311 | Grenadiers | | | |
| Isabella | 362 | 3d Brig Regt 10 th | | | |
| James & William | 393 | 5th Brig Regt 22d | | | |



Newport prison ship: Local prisoners on board



**Townsend-Goddard
cabinetmakers**



Capt. John Cahoone

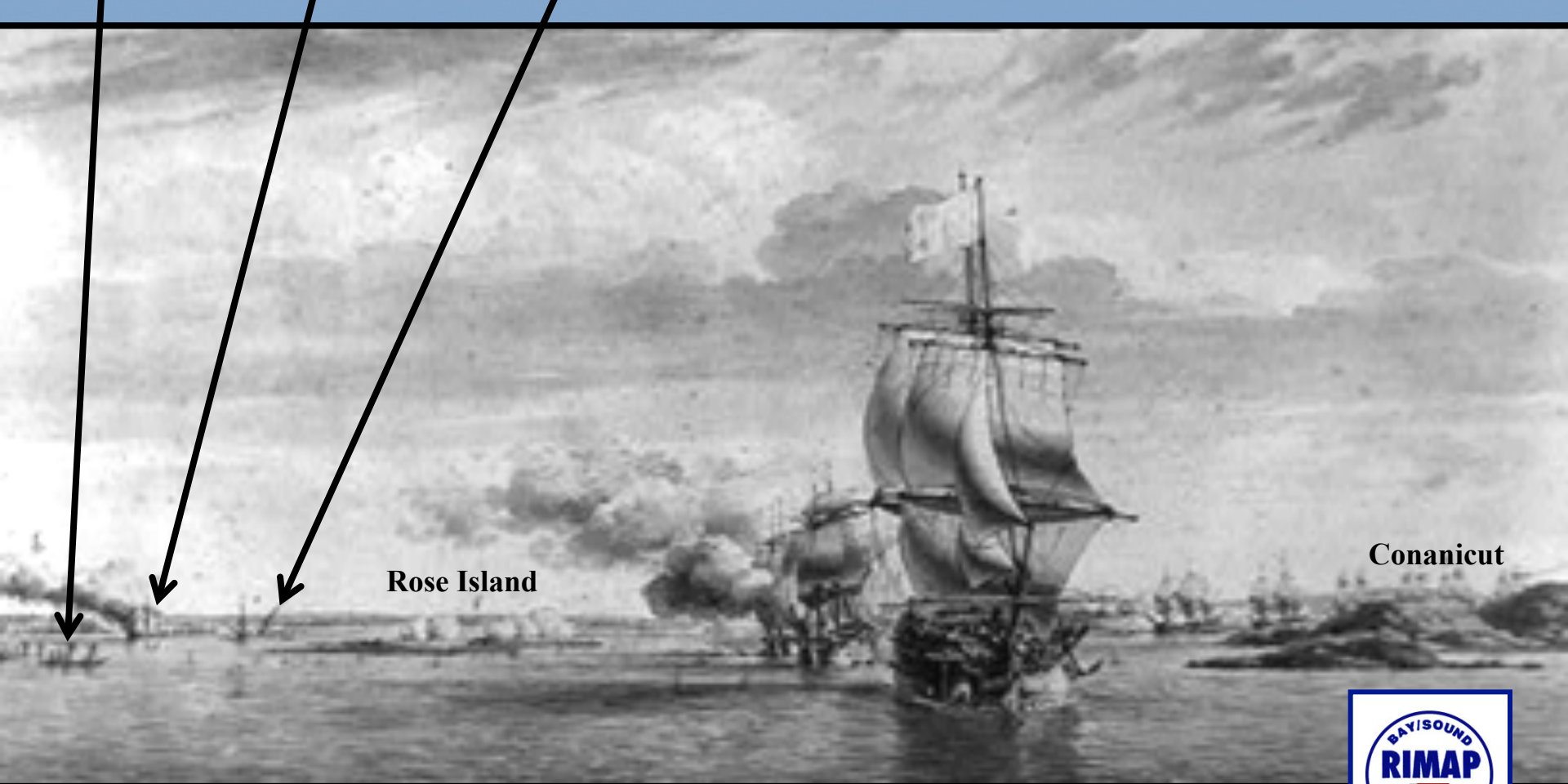


Transports scuttled: During French threat in 1778

Transports
nested North
of Goat Is.

The *Grand
Duke of
Russia* afire

Transports
West of
Goat Is.



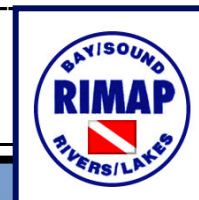
Rose Island

Conanicut

Drawing by Ozanne



| NAME OF TRANSPORT | TONNAGE | WHERE BUILT | TO SOUTH PACIFIC | BURNED | PRISON SHIP | TROOPS ABOARD |
|-----------------------------|-----------|----------------|---------------------|--------|----------------|--|
| BETTY * | 235 5/94 | ? | | | | ? |
| BRISTOL | 219 64/94 | ? | | | | ? |
| BRITANNIA * | 374 82/94 | America | | | | 16 th Light Dragoons |
| EARL OF ORFORD * | 231 71/94 | America | | | | 5 th Brigade / 43 rd Regiment / 57 th Regiment |
| GOOD INTENT * | 241 17/94 | Scarborough | | | | Hessians |
| GRAND DUKE of RUSSIA* | 671 84/94 | East Indiaman | Probably | Yes | | Multiple Regiments |
| LORD SANDWICH * | 368 71/94 | Whitby | Yes | | Yes | Larsborg du Corps Hessians |
| MALAGA * | 205 91/94 | America | | | | Hessians |
| PEGGY | 152 | ? | | | | ? |
| RACHEL AND MARY * | 320 7/94 | Hull | | | | 33 rd Regiment and Grenadier |
| SUSANNA * | 254 10/94 | Bristol | | | | 3 rd Brigade / 37 th Regiment / 54 th Regiment |
| UNION * | 261 66/94 | America | | | | Multiple regiments |
| UNION | 309 | ? | | | | ? |
| * = Owned by John Wilkinson | | | | | | |

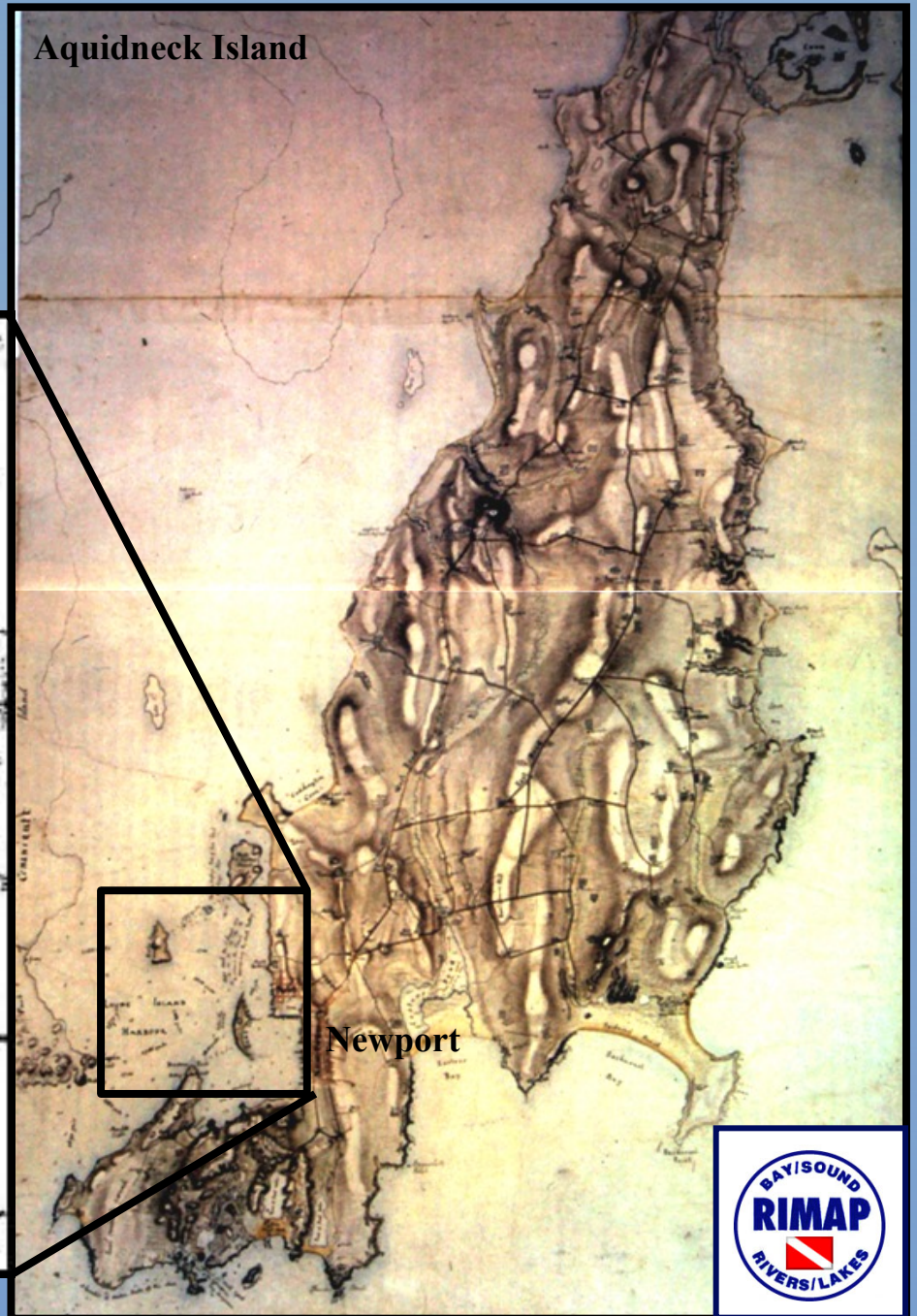
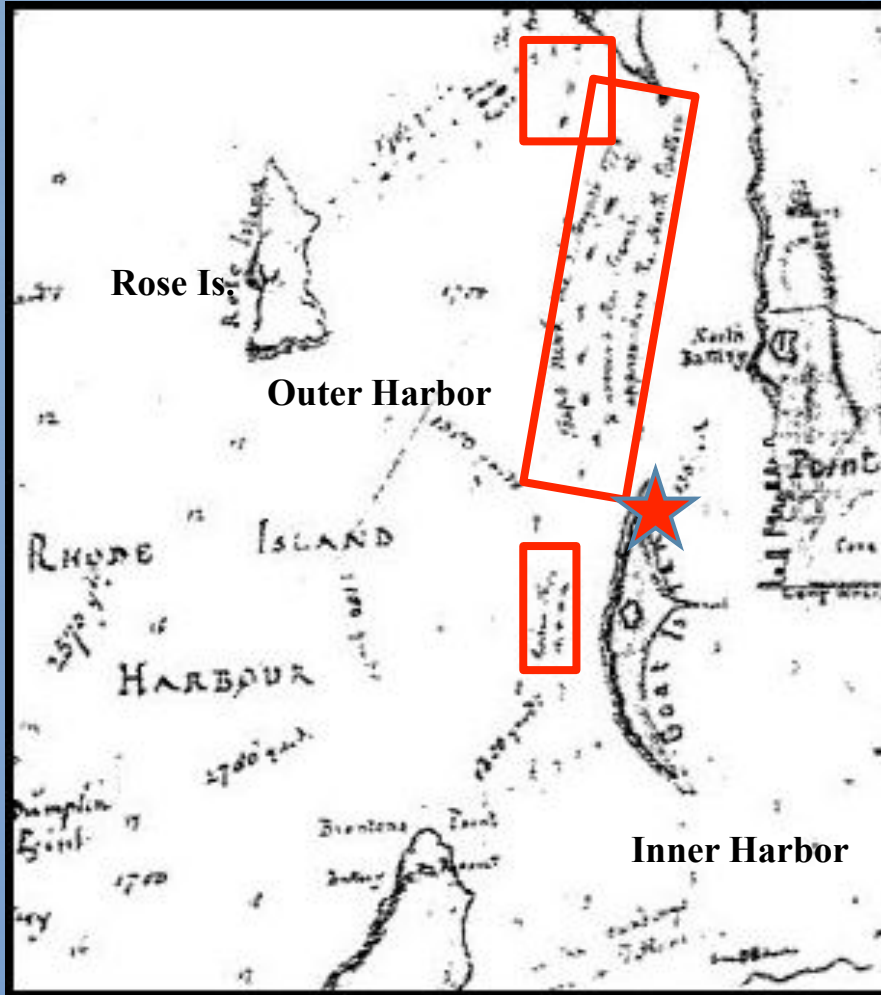


The original matrix of 13 transports

Transport locations: According to British engineer Ed. Fage



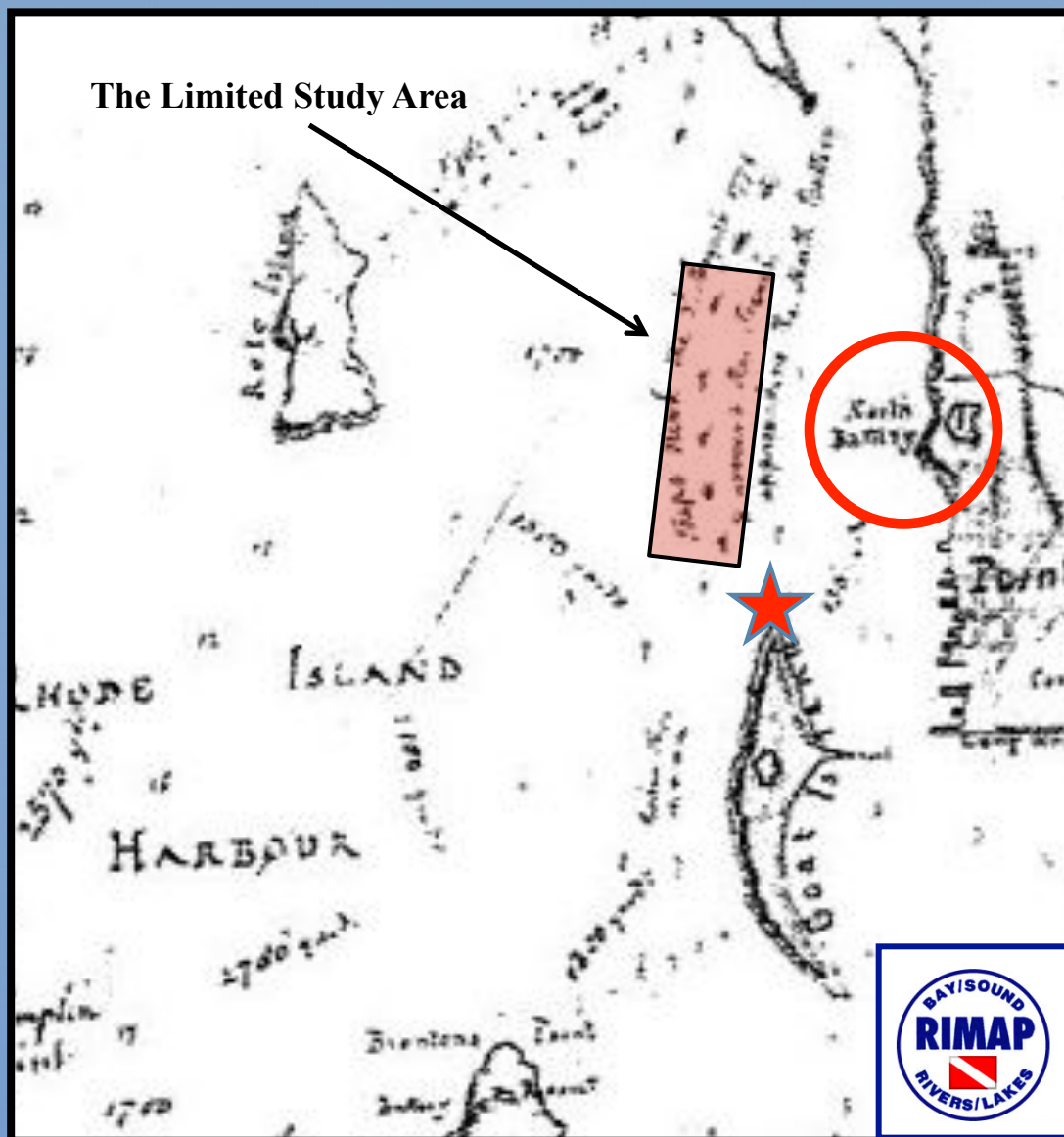
Where we are now



The five transports: Including the *Lord Sandwich*

★ We are here.

| Blue Rocks & Pest Island |
|---------------------------|
| <i>Bristol</i> |
| <i>Malaga</i> |
| <i>Esther</i> |
| Goat Island & N. Battery |
| <i>Lord Sandwich</i> |
| <i>Earl of Orford</i> |
| <i>Yowart</i> |
| <i>Peggy</i> |
| <i>Mayflower</i> |
| Goat Island & Rose Island |
| <i>Good Intent</i> |
| <i>Rachel & Mary</i> |
| <i>Susanna</i> |
| <i>Union</i> |
| Lime Rocks & Goat Island |
| <i>Lucy</i> |
| [Burned Off the Point] |
| <i>Grand Duke</i> |



The *Lord Sandwich* was the largest of the five!

| Transport Name | Tonnage | Built | Date | Troops | Comments |
|-----------------------|-----------|------------|------|--------------|-------------------------------|
| <i>Lord Sandwich</i> | 368 71/94 | Whitby | 1764 | Hessians | Collier/Prison/Pacific |
| <i>Earl of Orford</i> | 231 71/94 | Maryland | 1771 | 43 & 57 Rgt. | British troops |
| <i>Yowart</i> | 272 | Whitehaven | 1764 | Victualler | Collier? |
| <i>Peggy</i> | 152 | Rhode Isl. | 1773 | Victualler | Possible other <i>Peggy</i> ? |
| <i>Mayflower</i> | 197 | Whitehaven | 1769 | 71st Rgt . | Collier? |

SUMMARY: Diagnostic samples and artifacts may help to identify each site, based on:

3 vessels were built in northern England; all 3 appear originally to have been colliers.

2 vessels were built North America, but were in North Atlantic trade.

1 vessel carried Hessians troops; 2 carried British troops; 2 with provisions.

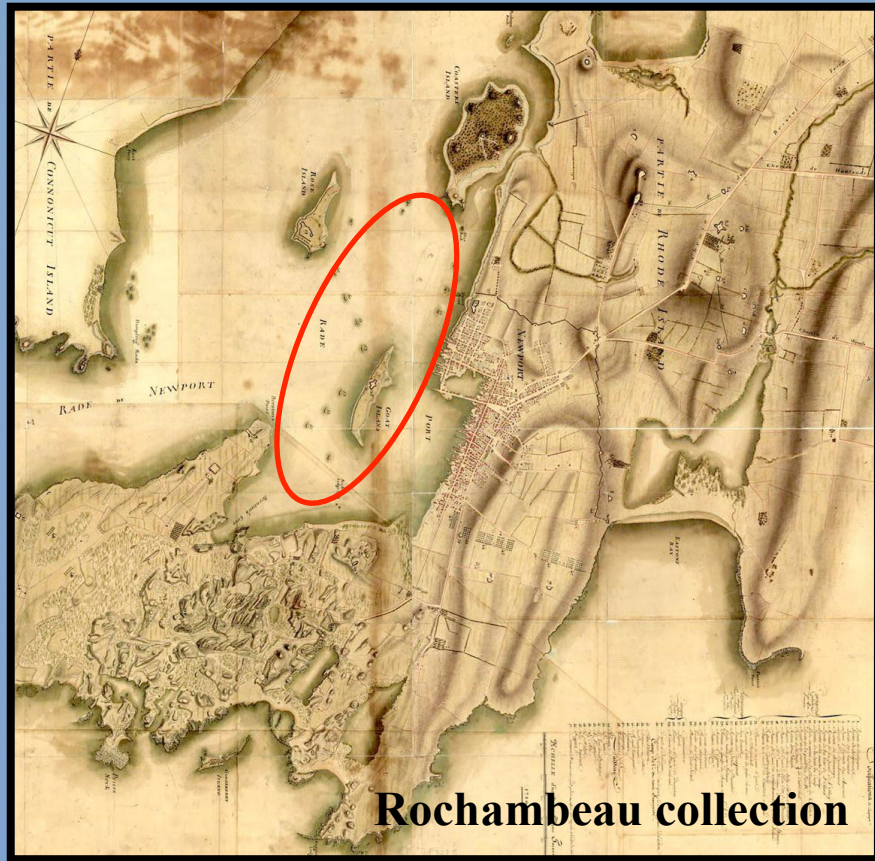
Knowles reports that all were selected because they were in poor condition.

It appears that the *Lord Sandwich* was the largest scuttled in this location.

More historical information will help to confirm identification. © RIMAP 2016



Later disturbance: Newport's Outer Harbor



1780 - French sailors salvaged anchors and other gear from the British transports.



Goat Island Torpedo Station tests

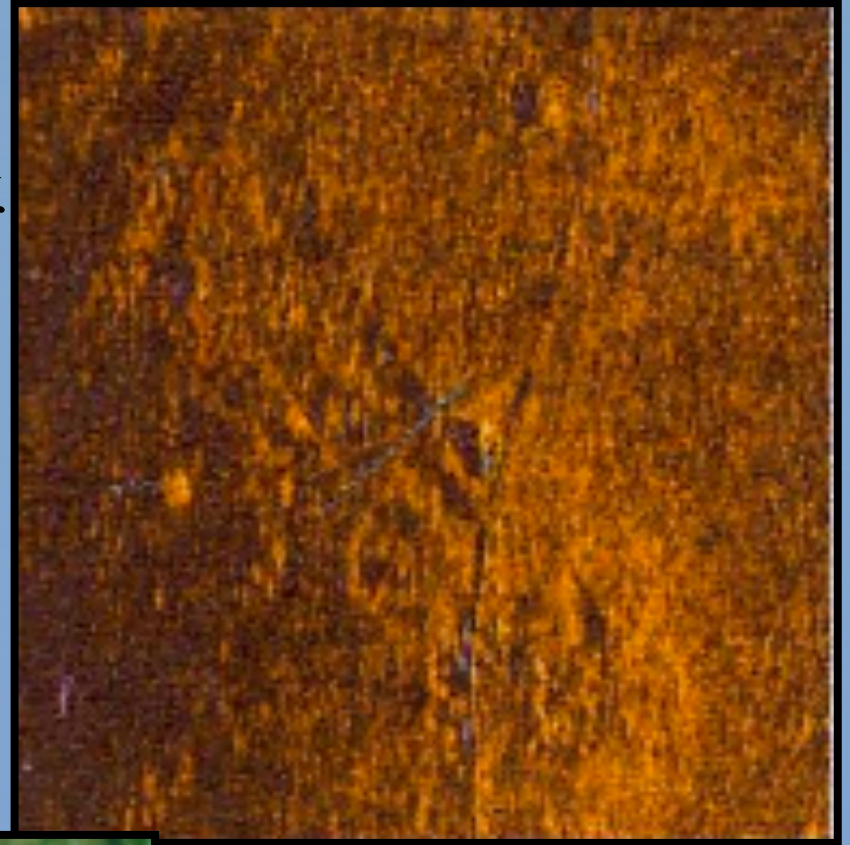


How to find the sites: Multiple remote sensing surveys



Joe Zarzynski

Garry Kozak
Sonar target of
RI 2394



Vince Capone



NUWC



Rod Mather

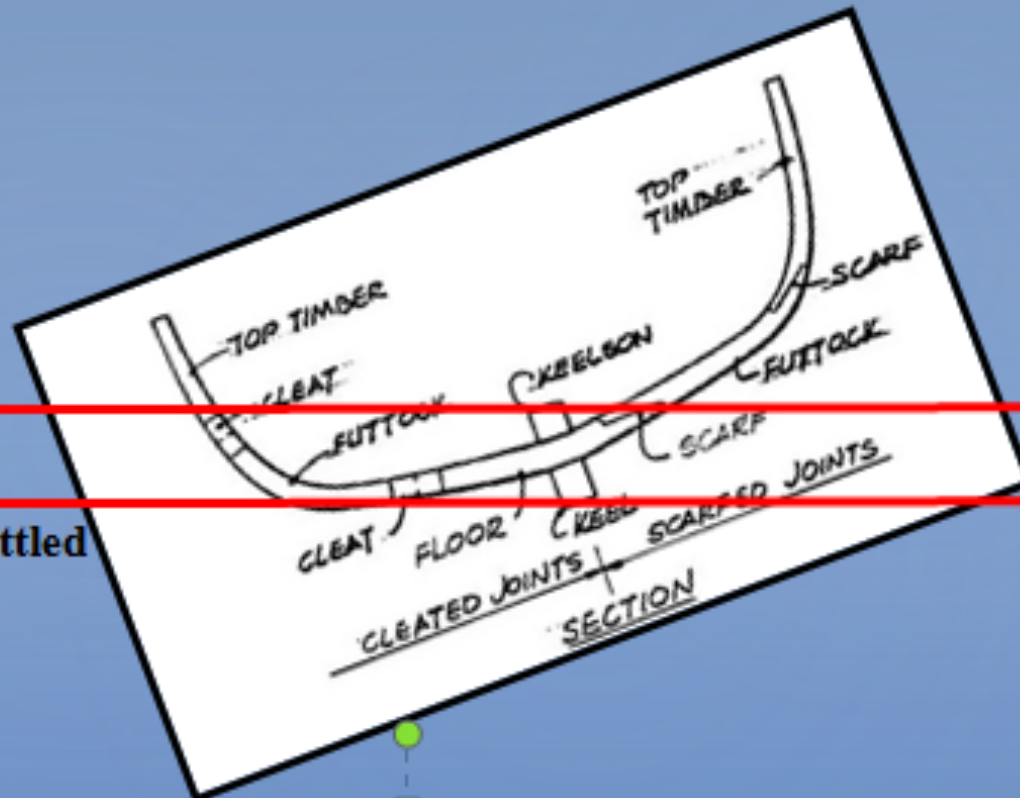


What may be left:

- These 18th-century sites are subtle and hard to see,
- But there is apparently a great deal of material left under the covering silt.

Covering Silt

Where she settled



Artifacts: Great variety of cultural material, but we have removed little because of lack of a conservation facility. That will be needed before excavation begins.



Is It The *Endeavour* Bark?



“The Field Studies”

Kerry Lynch, Ph.D.

RIMAP – Field Supervisor

Fieldwork teams: RIMAP and ANMM

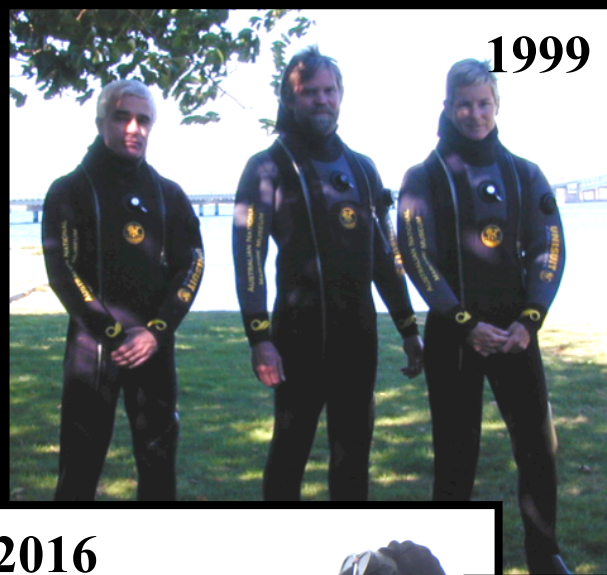
1993



2001



1999



2000



2016



2017



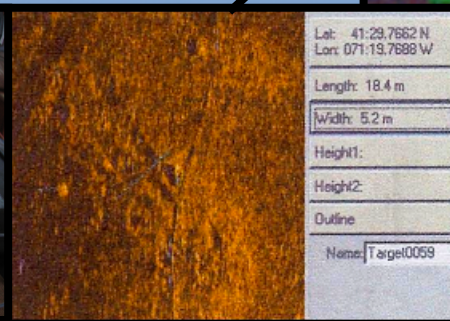
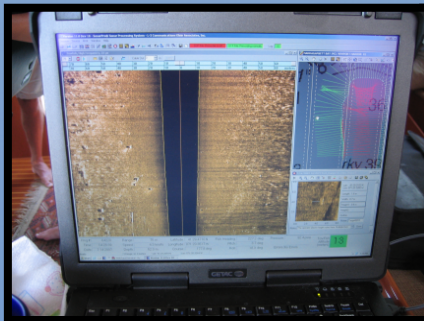
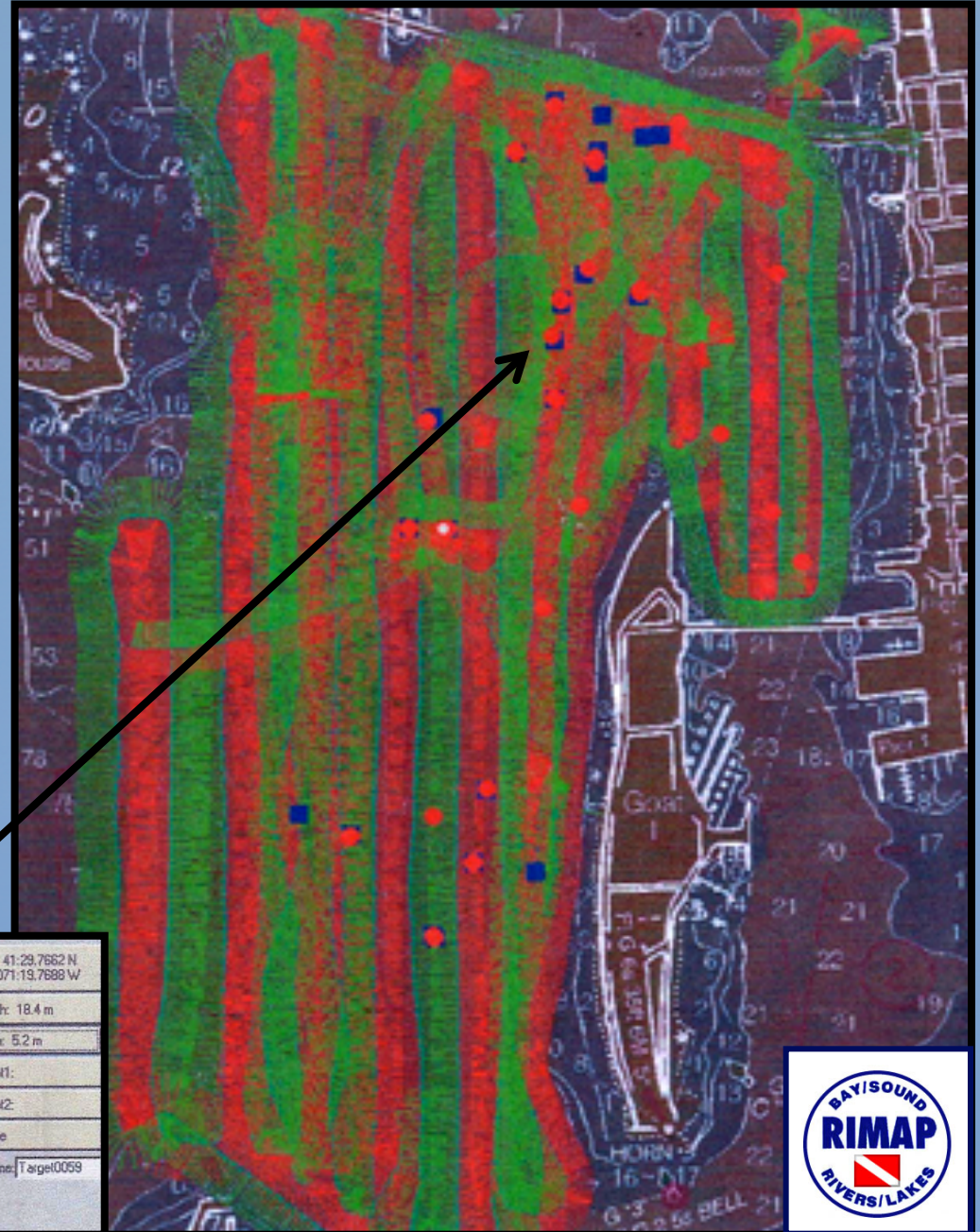
2017

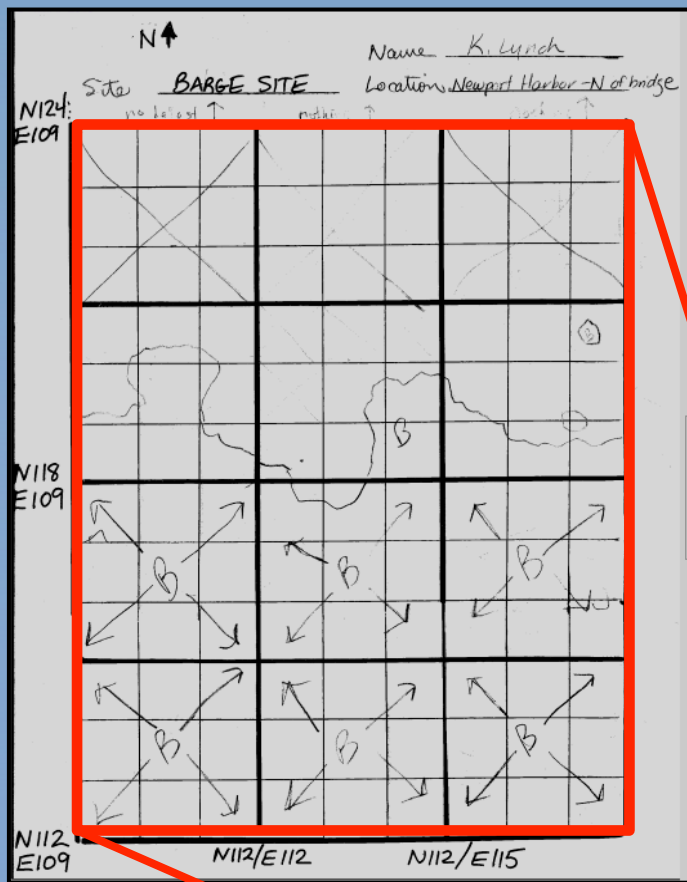


Ground-truthing the remote sensing targets:

The 2007 Kozak data:

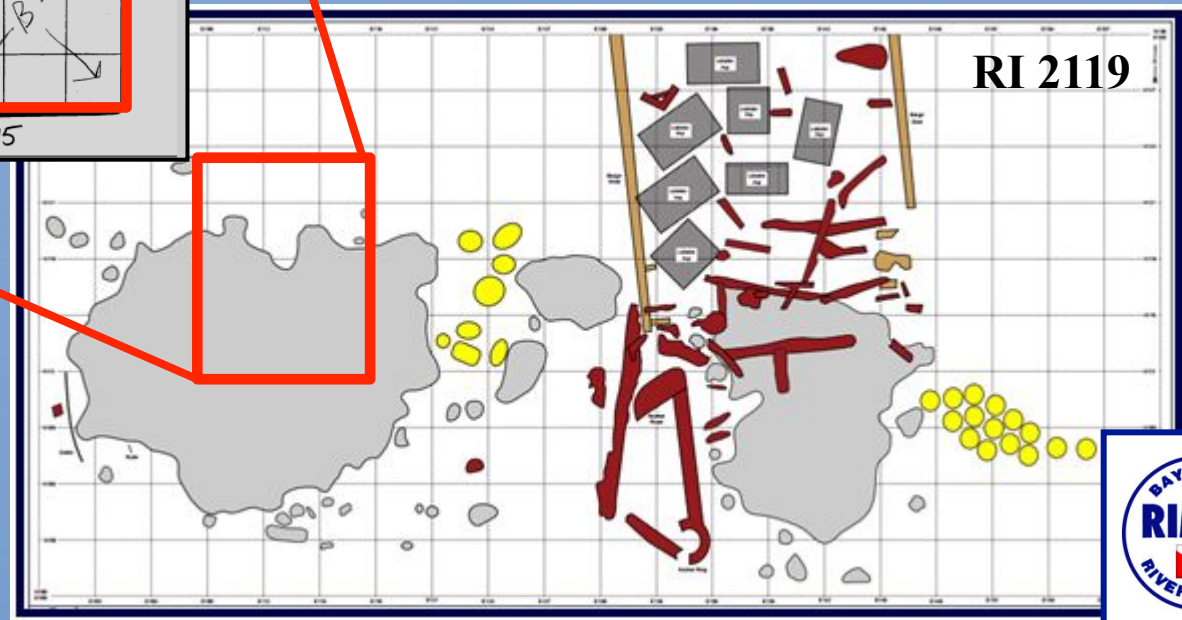
- 6 ballast piles
- 5 modern vessels
- 2 torpedoes
- 5 abandoned ground tackle
- 2 geology
- 1 unidentified
- (we ignored moorings)





Documenting the sites:

- Site maps - Grids, sketches, measurements
- Photography
- Metal detecting
- Limited test excavations

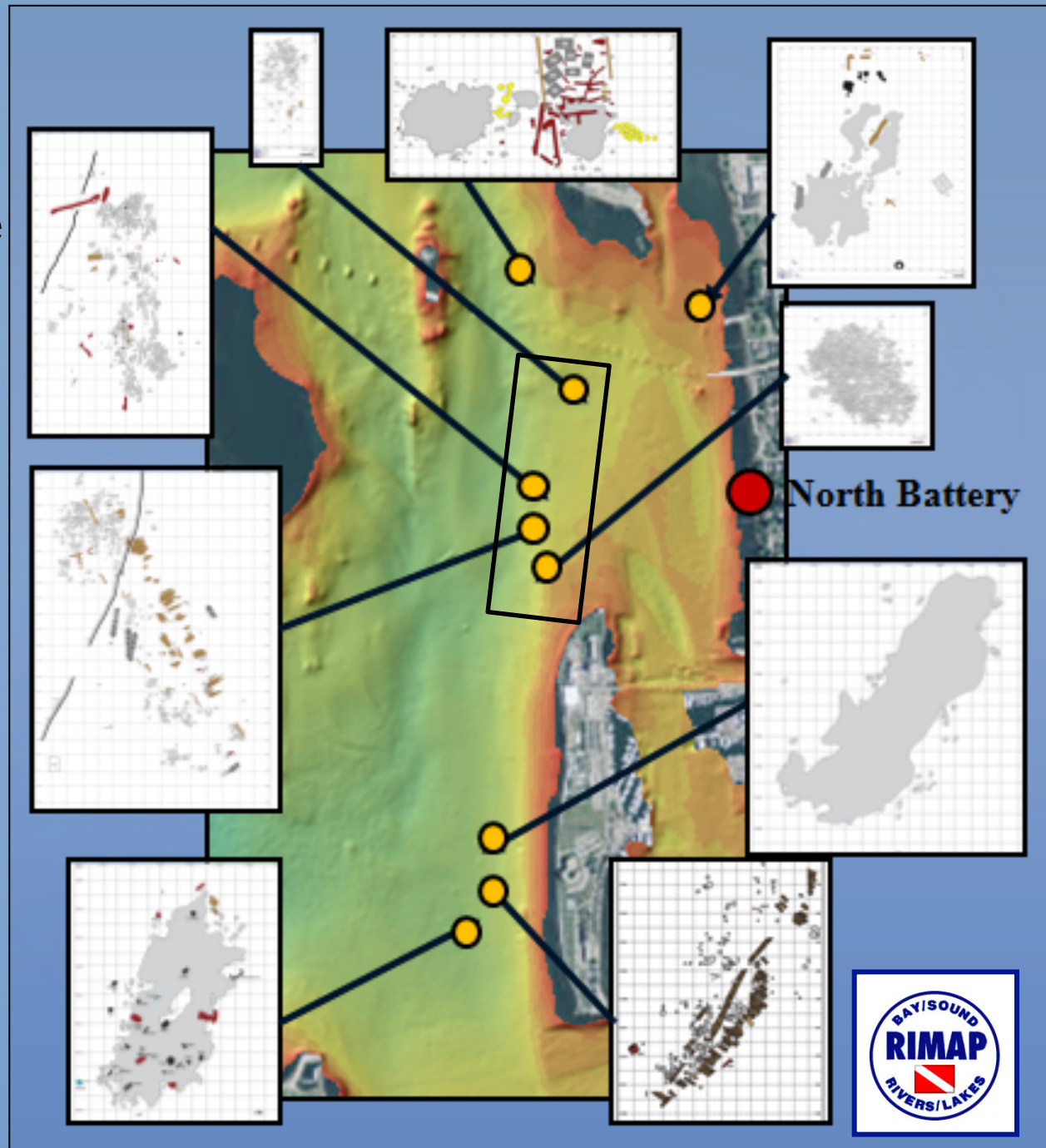


By 2015:

**9 sites mapped in the
Outer Harbor, 4 in
Limited Study Area.**

**Locations are
approximate on the
NOAA chart, but
consistent with the
Fage chart.**

**Site maps are to the
same scale to show
relative sizes.**

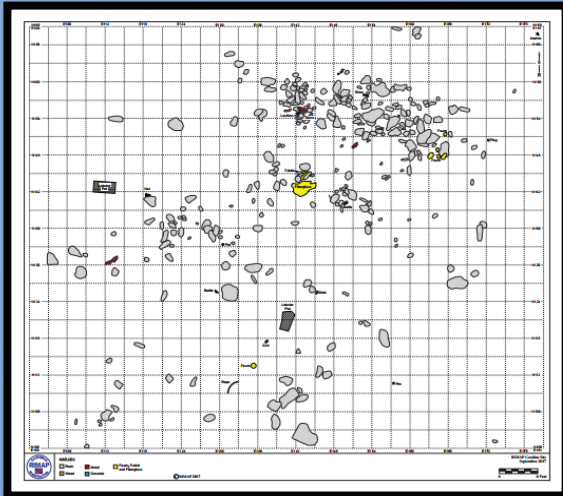


The 2016 and 2017 fieldwork in the Limited Study Area

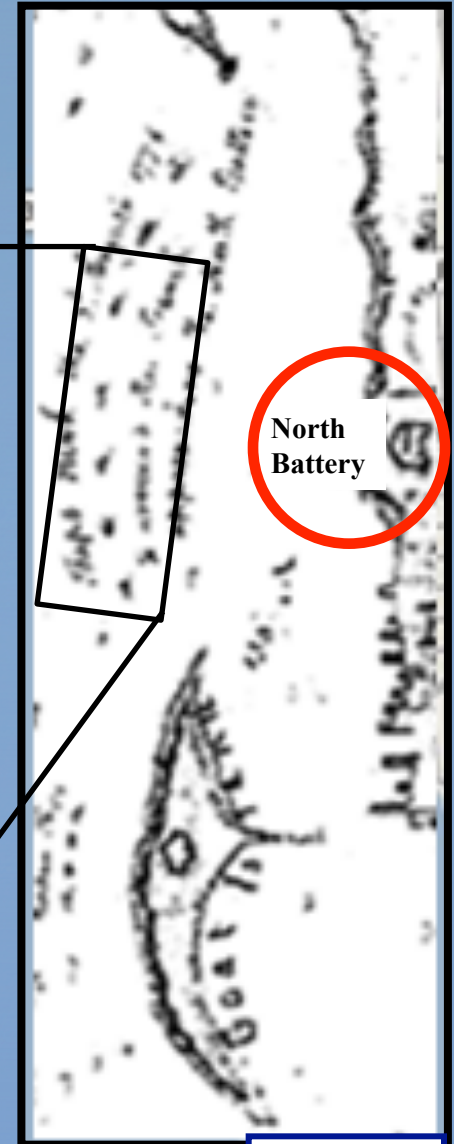
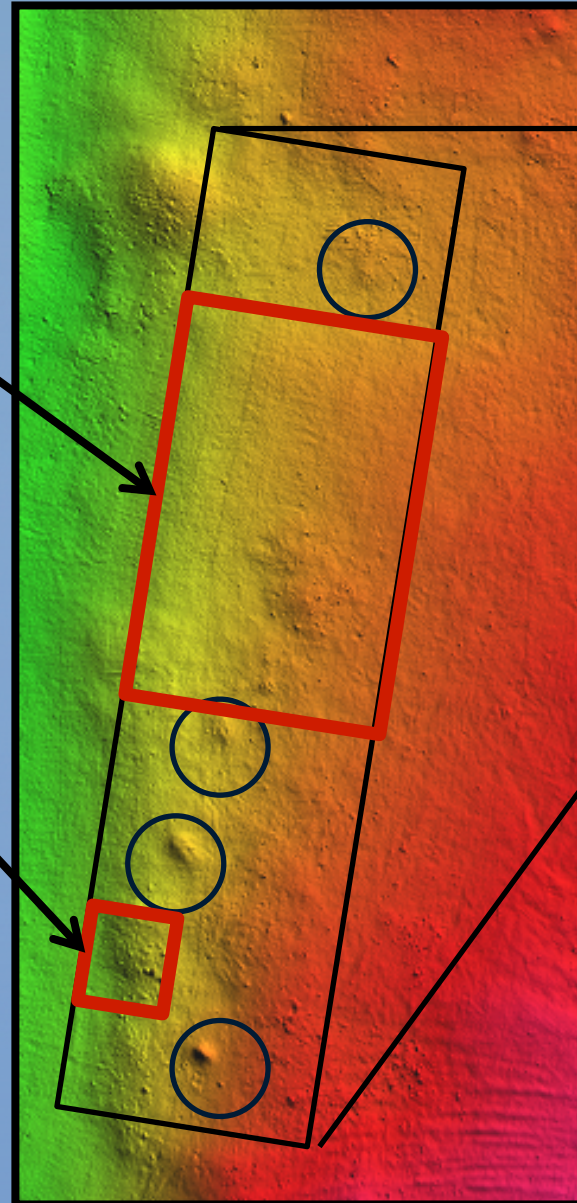
Known sites ○

Search results: Void

Mapped a badly disturbed area



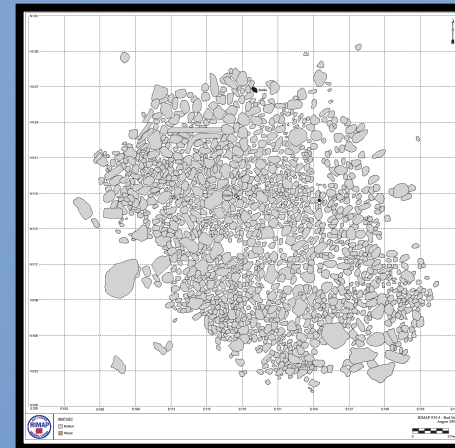
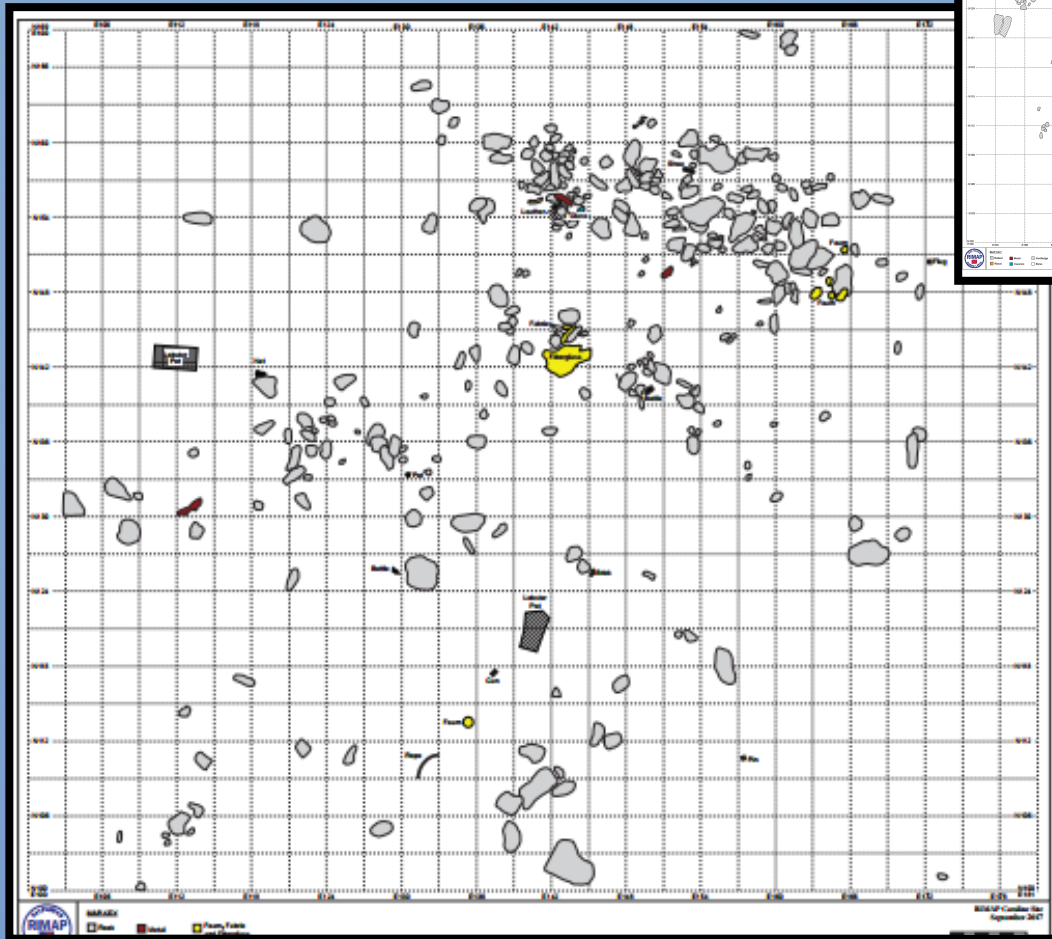
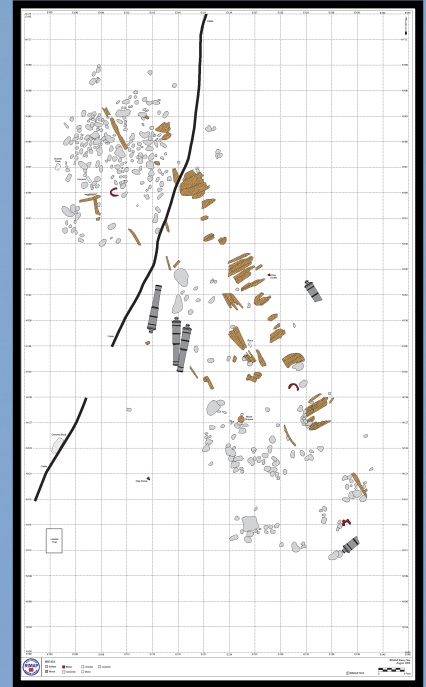
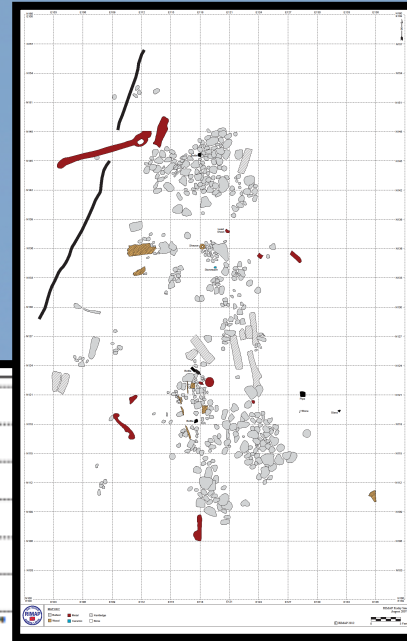
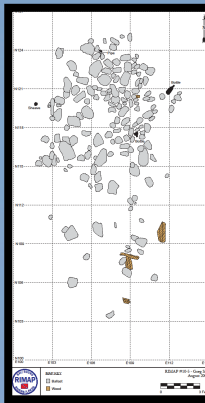
Possibly other sites completely destroyed?



North Battery

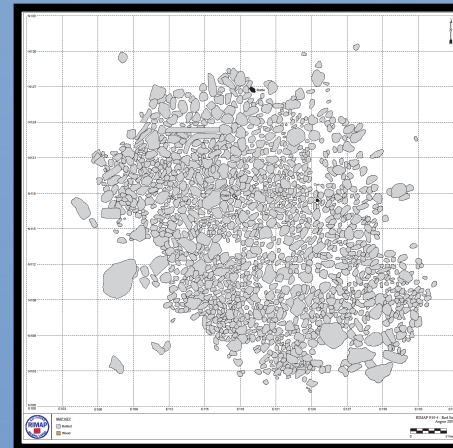
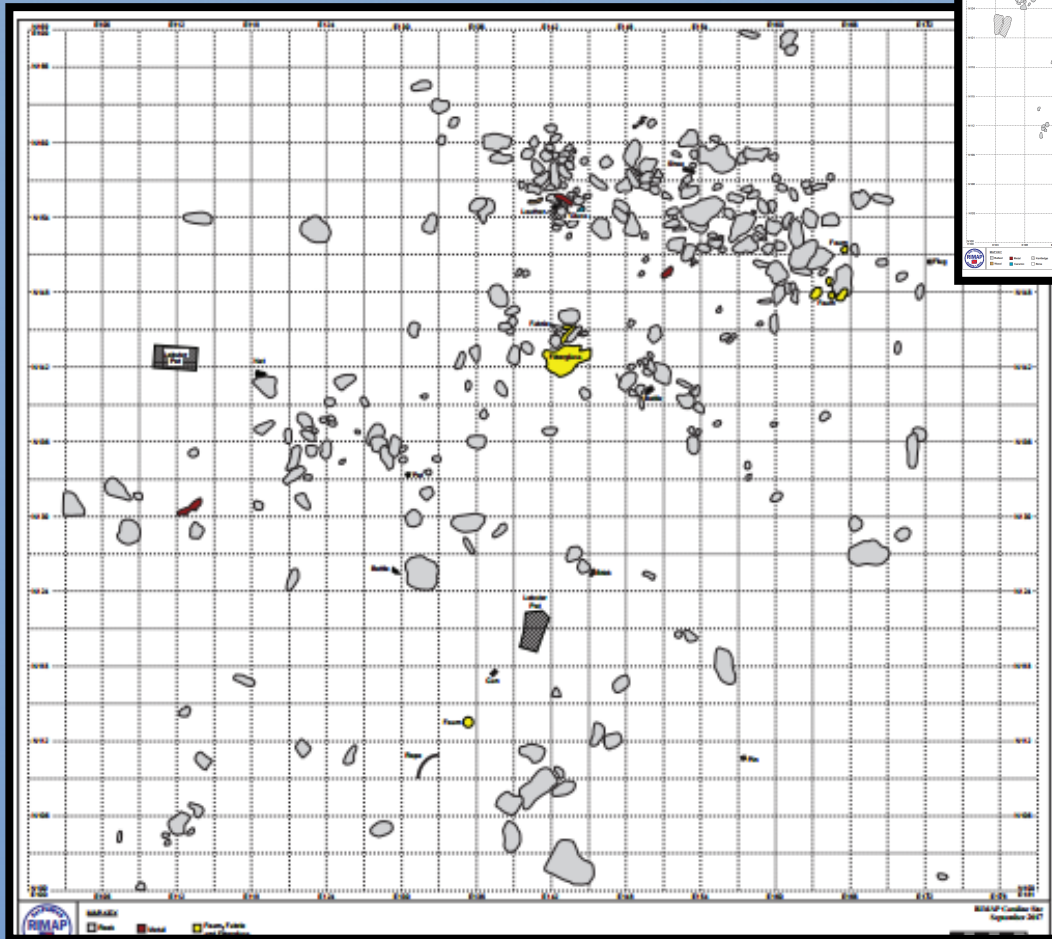
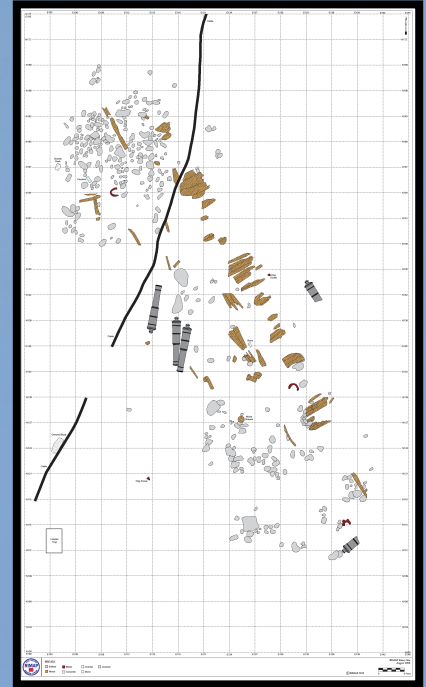
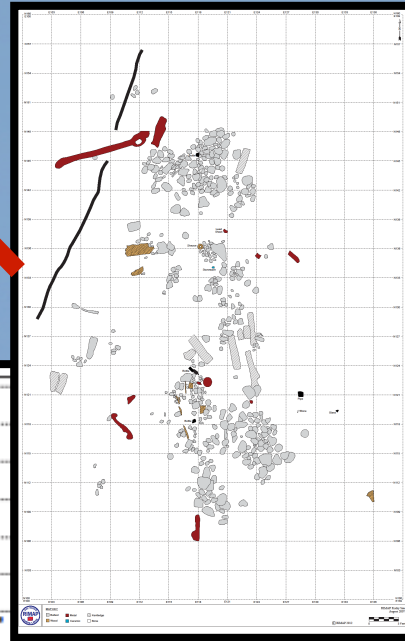


The five possibilities:
Could one be the
Lord Sandwich
Ex *Endeavour*?

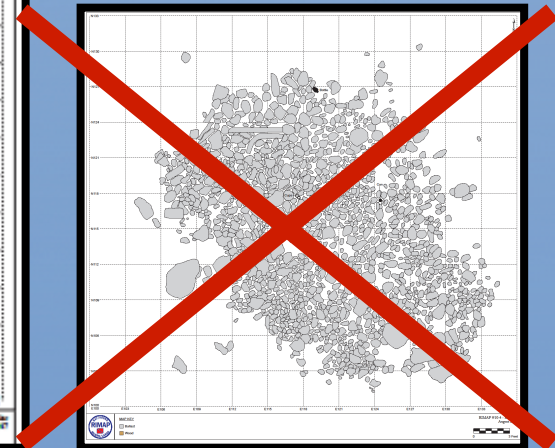
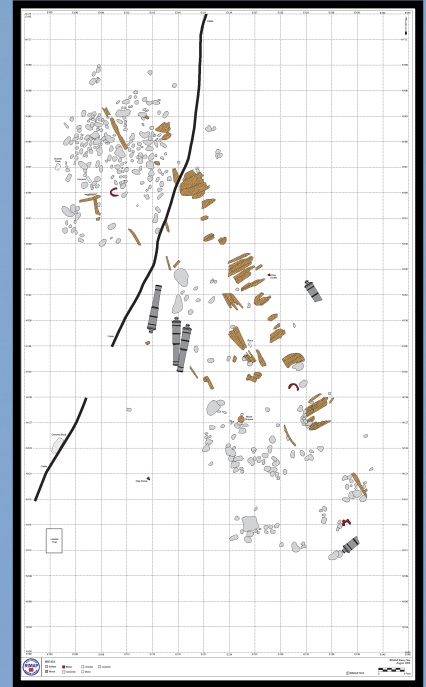
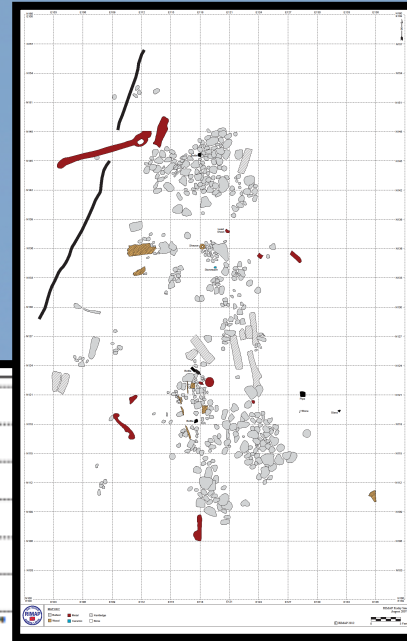
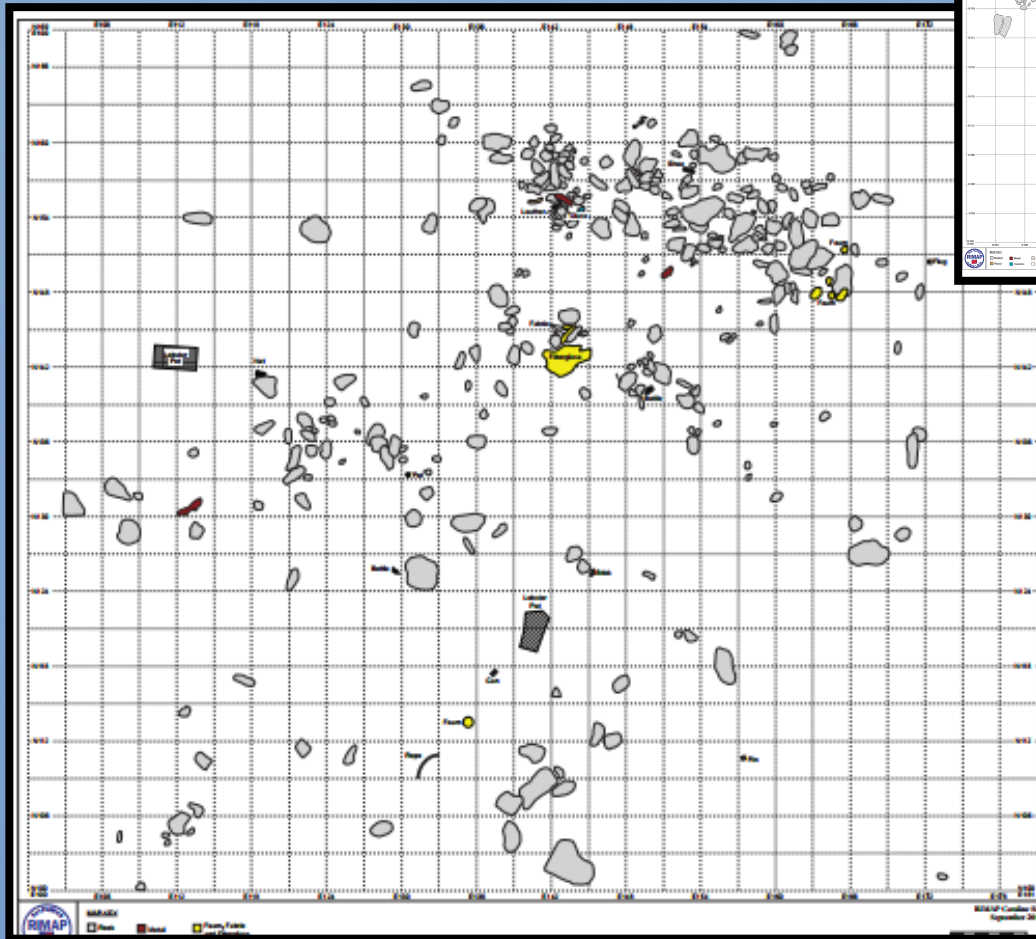


Looking for the
largest:

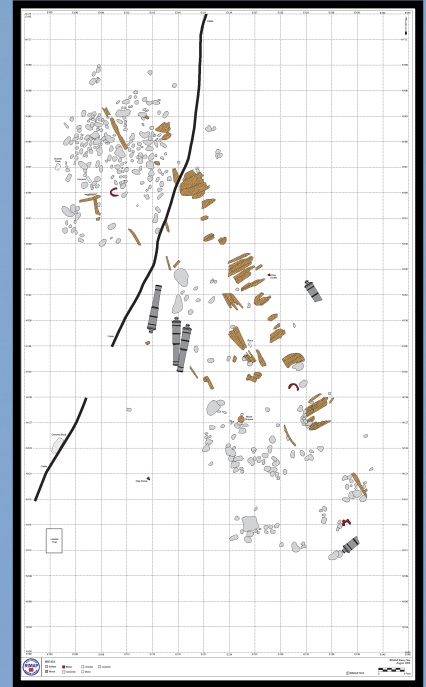
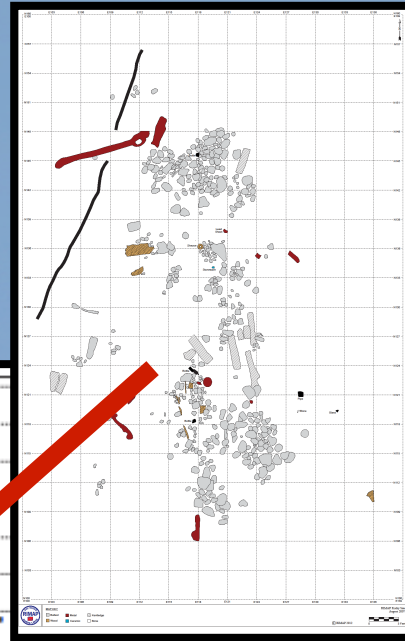
RI 2396 appears to
be too small.



**RI 2393 too small with few
cultural materials.
Possibly just a ballast dump.**

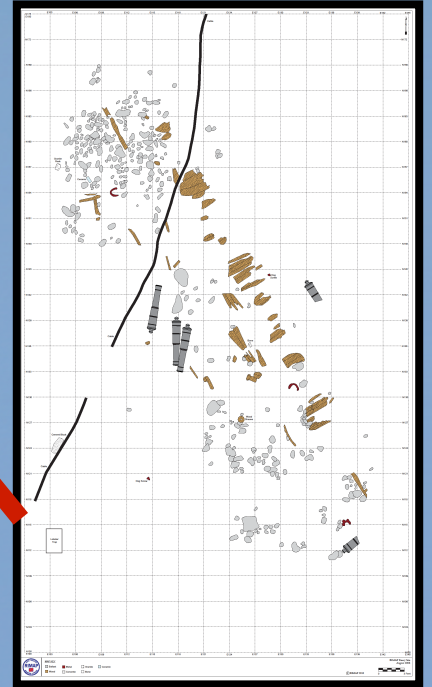


**RI 2794 is mostly geology
with few scattered historic
artifacts. Possibly a badly
disturbed site.**



Two left to consider:

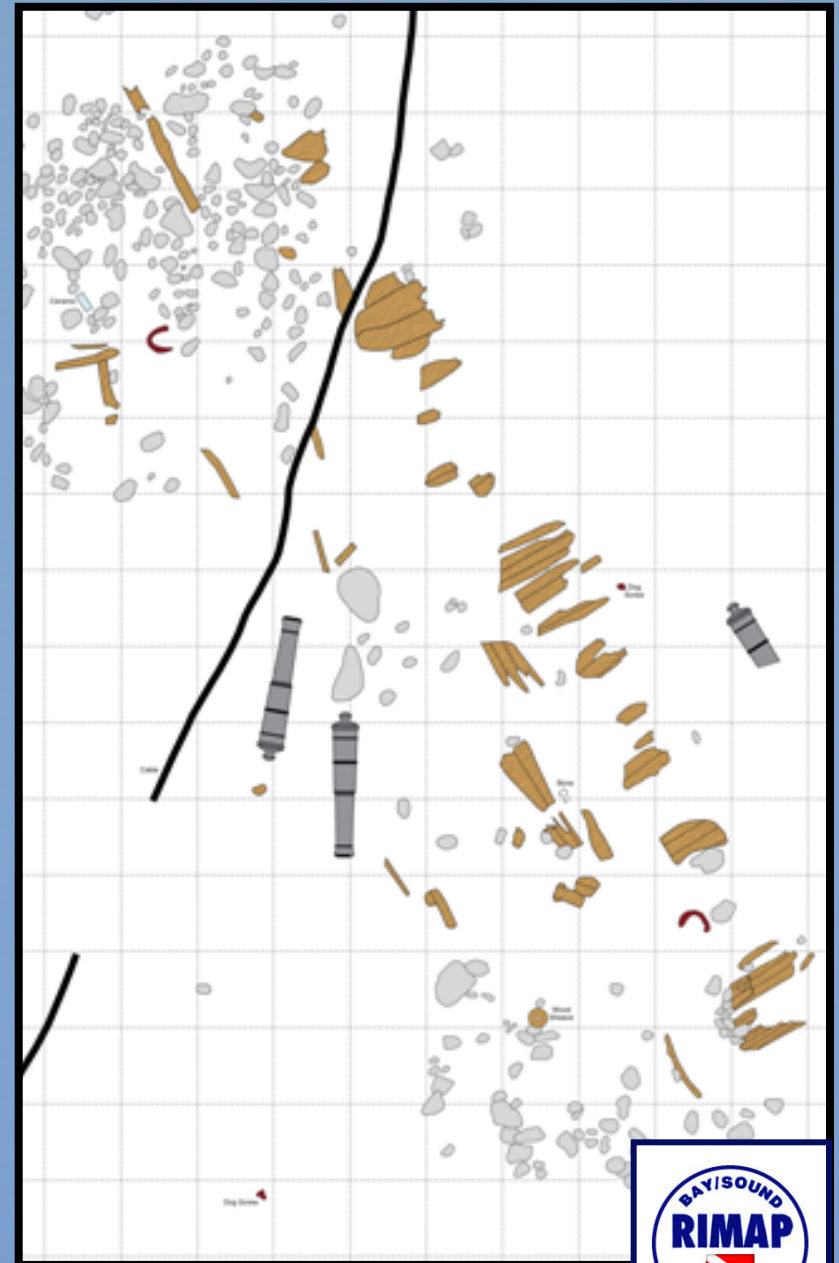
RI 2578 appears to be smaller, but has appropriate cultural material.



**RI 2394 is the best candidate
by the process of elimination.**

Then start detailed studies:

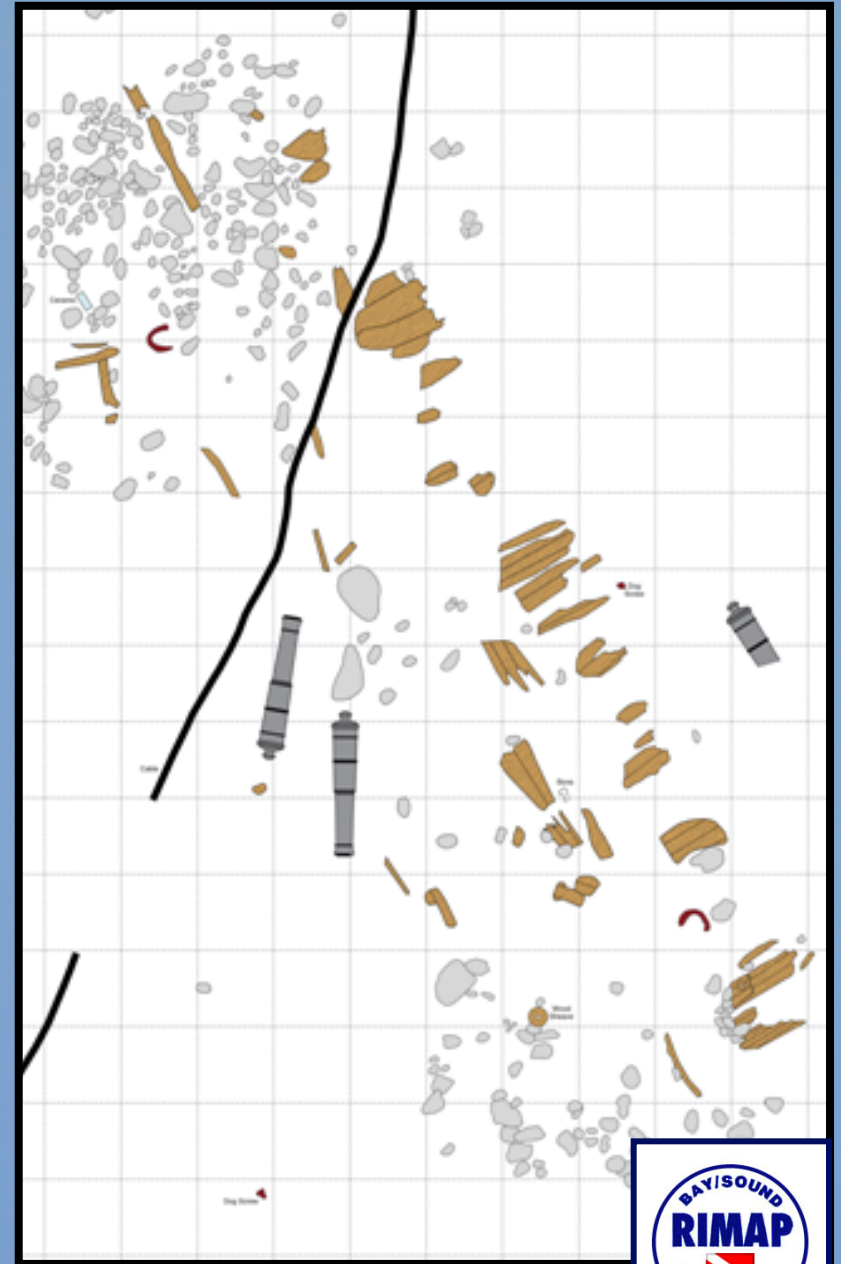
- **Measure cannons**
- **Measure timbers**
- **Sample timbers**
- **Photogrammetry**
- **Further historical research**



Could this be the *Endeavour*?

To prove it:

- Selected excavation.
- Continued measuring, sampling and photography.
- Artifact analysis.
- With a conservation and storage facility in place!



Is It The *Endeavour* Bark?



“Photogrammetry of Details”

James Hunter, Ph.D.

ANMM - Archaeologist

Limited visibility:

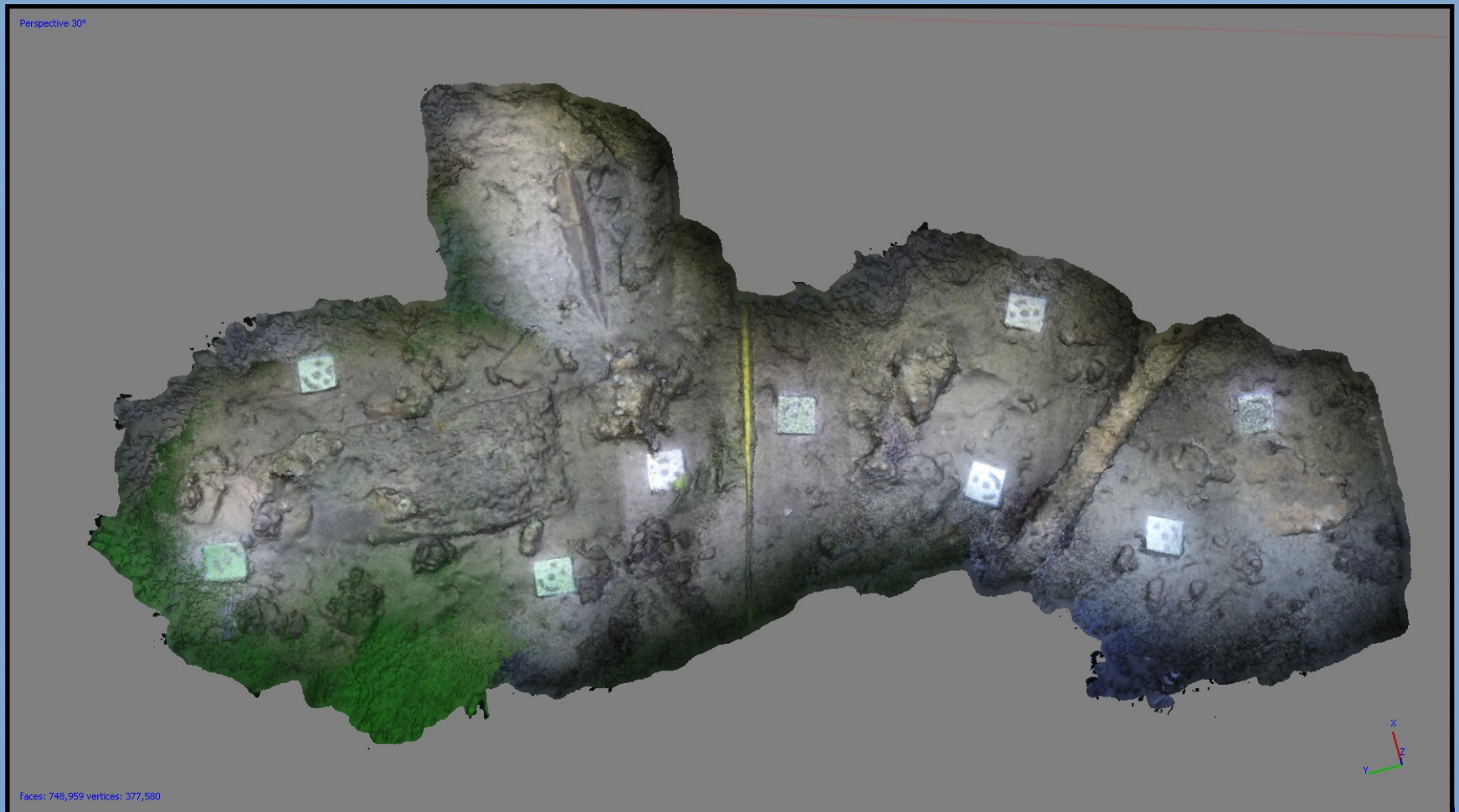
A challenge for photography

Photographer: Irini Malliaros

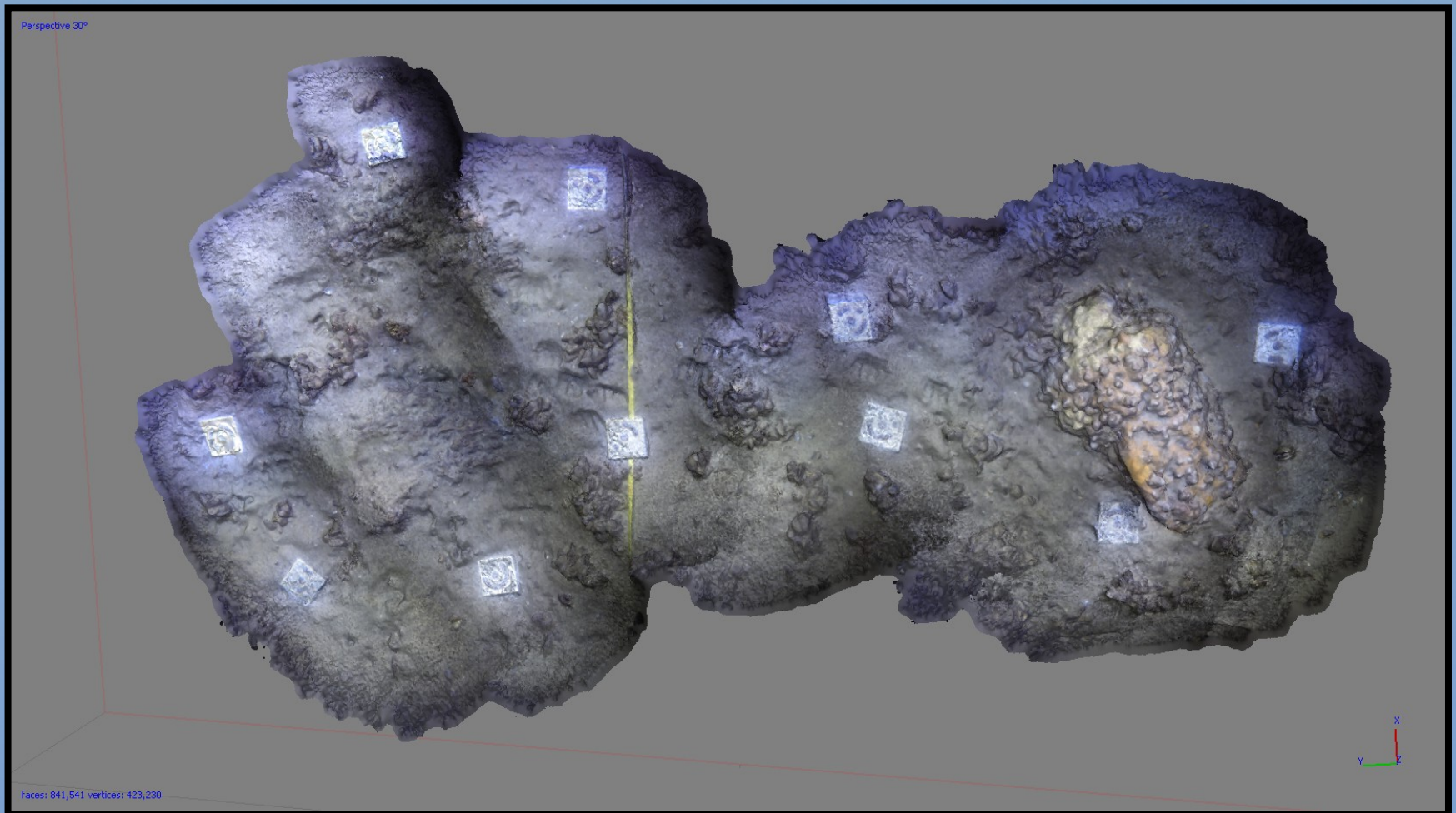
Modeller: James Hunter



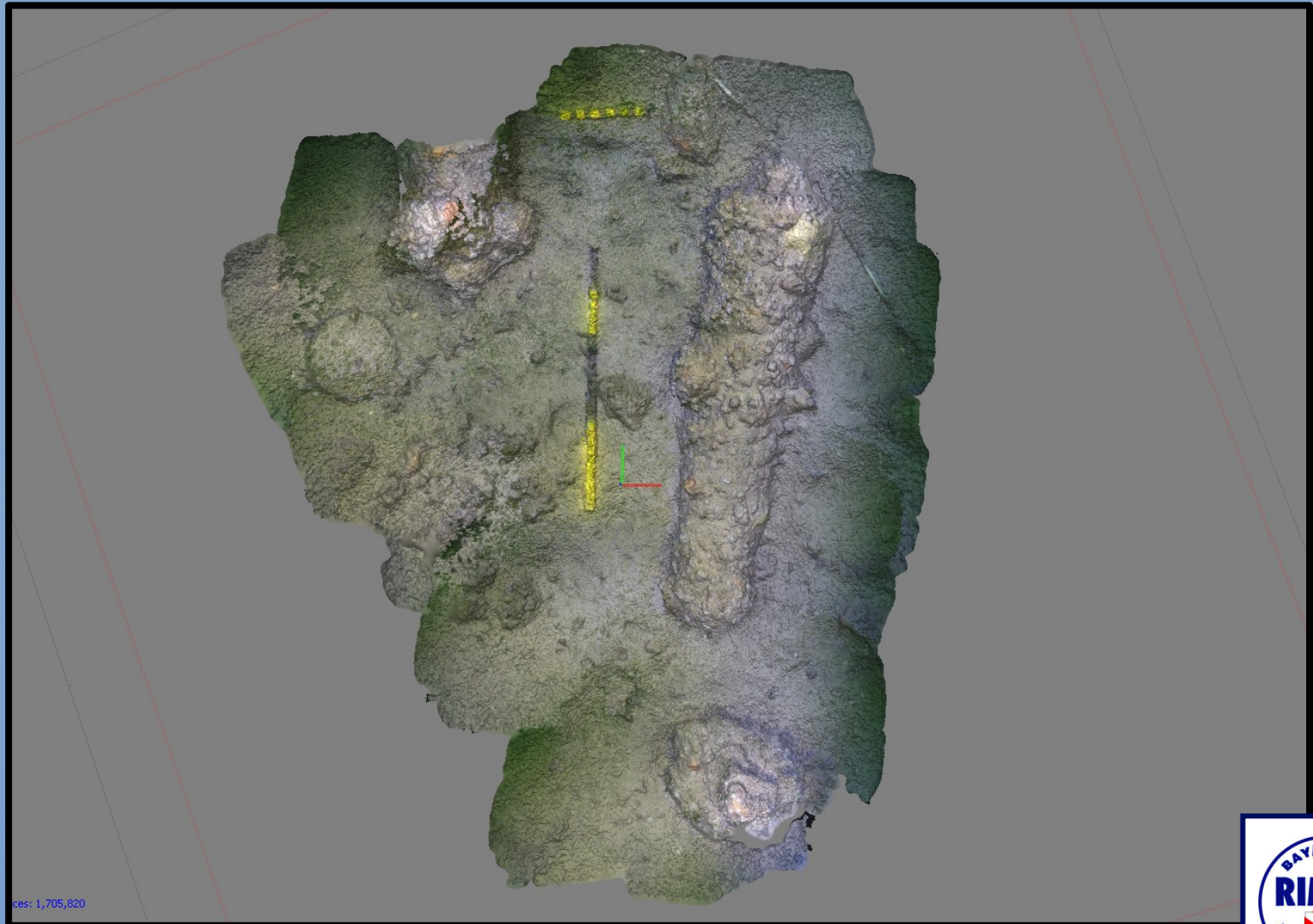
Collapsed futtock and hull plank



East Cannon Breech



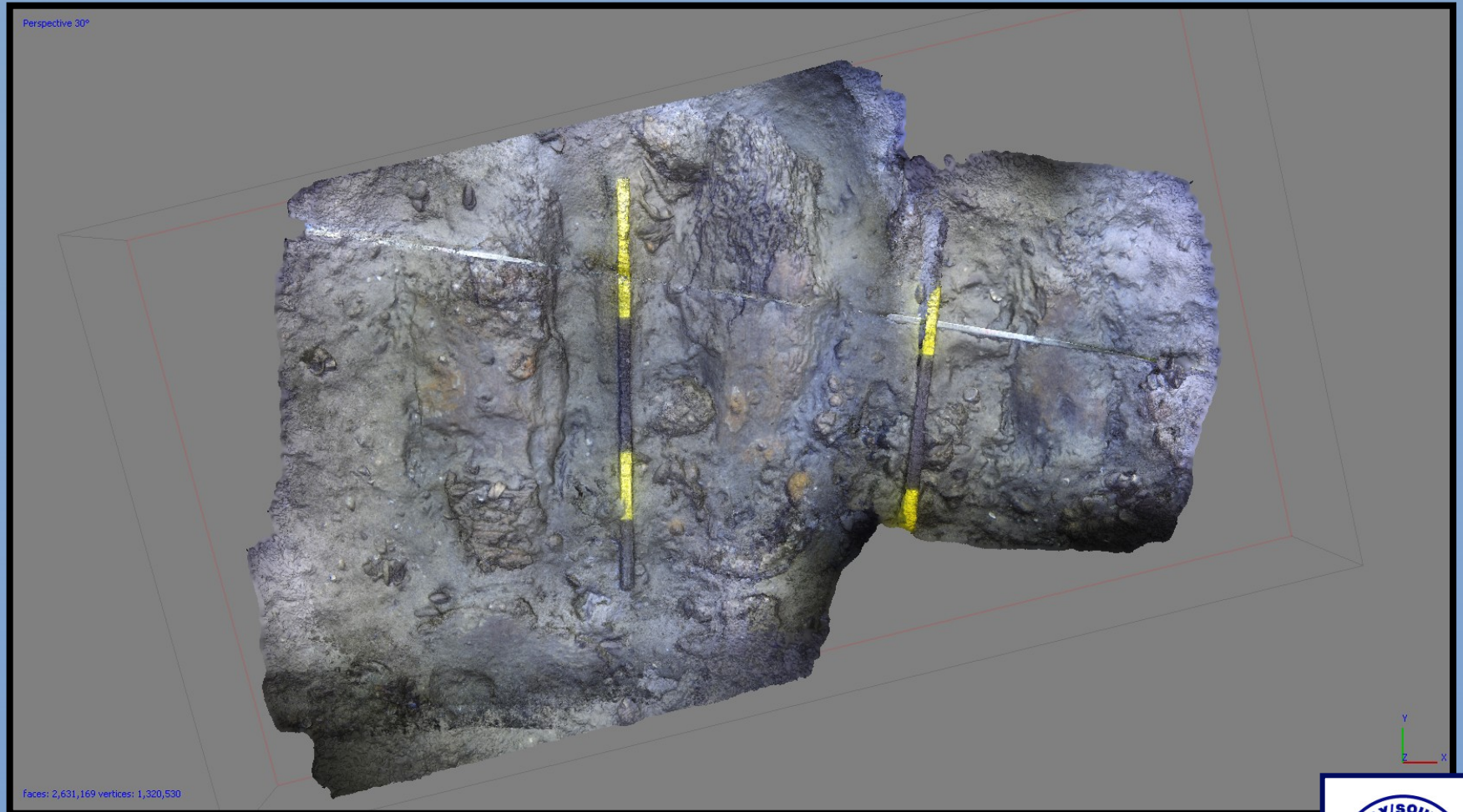
Exposed west cannon



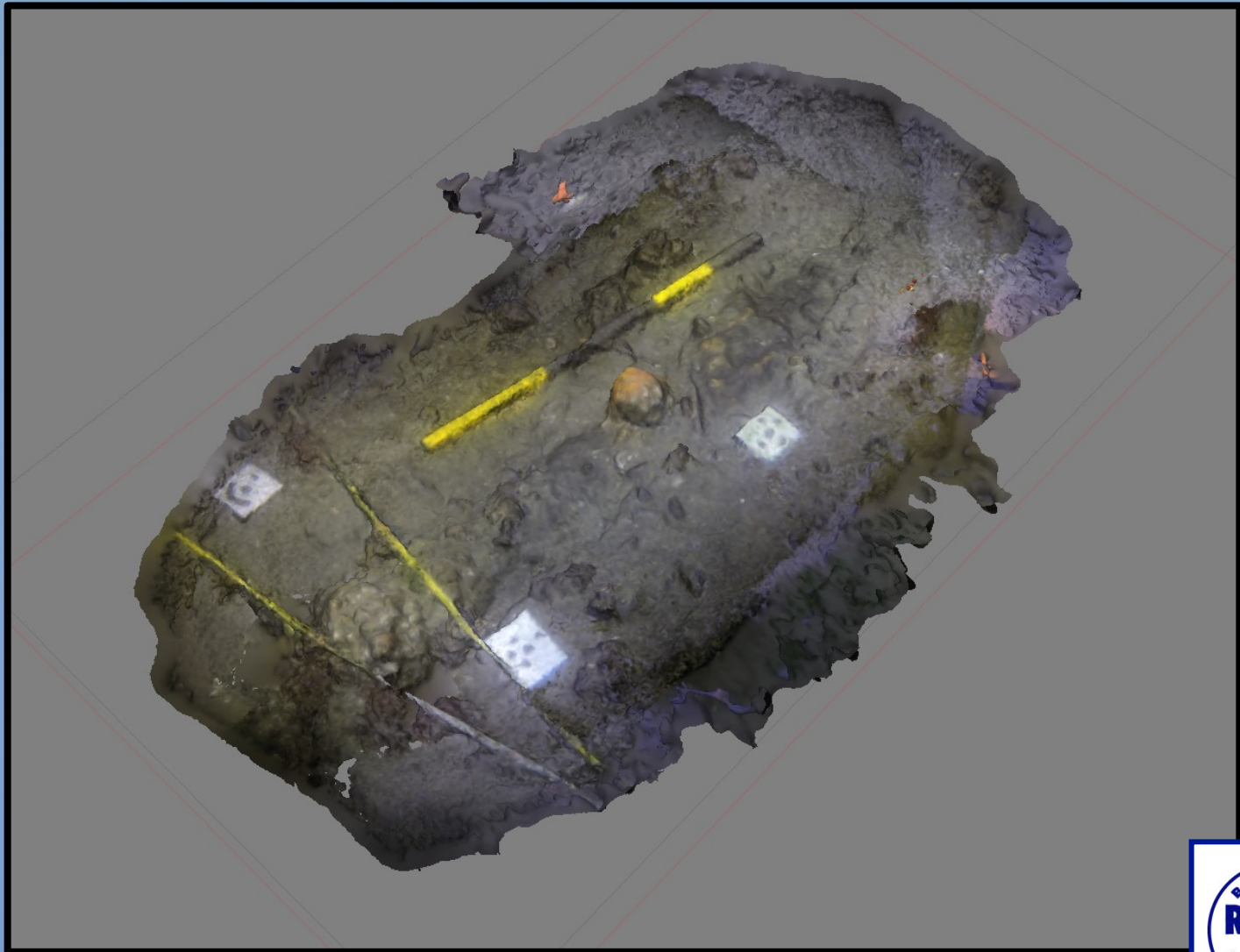
ces: 1,705,820



Midship Frames



South Cannon Muzzle



Put it all together
for the first digital
photogrammetric
images of the
possible

Endeavour!

Please help us
prove it!

